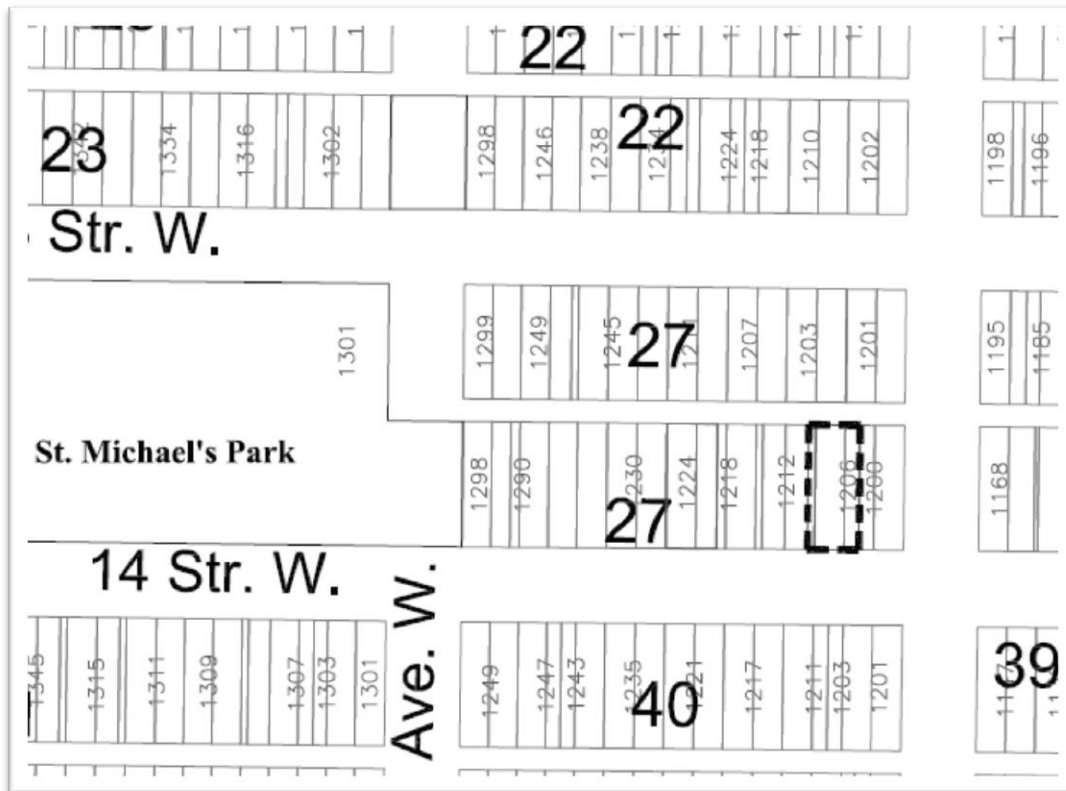


# FOR SALE

## RESIDENTIAL LAND



<b>ZONE:</b>	<b>R3 – Two Unit Dwelling</b>
<b>CIVIC ADDRESS:</b>	<b>#1206 – 14<sup>th</sup> Street West</b>
<b>LEGAL DESCRIPTION:</b>	<b>Lots 27, ext 52 &amp; 28, Block 27, Plan H Lot 36, Block 27, Plan 101354633 ext 53</b>
<b>LOT SIZE:</b>	<b>45 ft. x 110 ft. (4,950 SF)</b>
<b>SERVICES:</b>	<b>Services running near the property and would be an additional cost to the purchaser to service the property. Rear lane, no pavement, sidewalk or curb.</b>
<b>LISTED PRICE:</b>	<b>\$1 with \$10,000 retainer</b>
<b>CONDITIONS:</b>	<b>land sold “as is”; 1 yr. build</b>

CONTACT:  
 Leanne Fyrk, Property Coordinator  
 Phone: 306-953-4377  
 Fax: 306-953-4380  
 Email: [lfyrk@citypa.com](mailto:lfyrk@citypa.com)  
[www.citypa.ca](http://www.citypa.ca)



City of  
**Prince Albert**